

# CORELUNDER

## bulletin

SEPTEMBER 2010

Publication of Corel Down Under Inc.

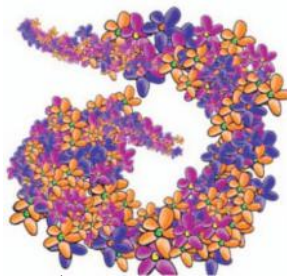
Corel Down Under Inc. Mail address: PO Box 833 Ringwood Victoria 3134 The CDU phone: 0432 931 241

**Corel X5 update** A new update, Service Patch 1 (SPI) for CDGS X5, for all Corel X5 users is now available. Either go to the link; <http://www.corel.com/servlet/Satellite/au/en/Content/1157481830100?pid=1279212571086> or you can also find it by visiting the main Corel Web site at [www.corel.com](http://www.corel.com) then choose Support > Patches and Updates from the main menu along to top of the page, then choose Corel DRAW Graphics Suite X5 from the list of available patches.

**This** months Tutorial is by Tanya Lux and can be found on the Corel web site. Go to [www.corel.com](http://www.corel.com) and follow the tabs through to tutorials.

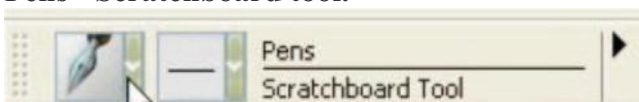
## Creating An Image Hose in Corel Painter

The Corel Painter Image Hose is like a brush that lets you spray images. Follow this tutorial for step by step instructions on how you can create your own custom Nozzle that paints with images *you've* created.

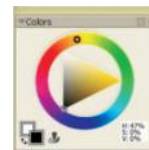


1. Begin with a new document, **File - New - 200 x 200 150 dpi**. Zoom into the canvas about 270%.

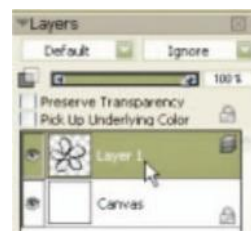
2. From the **Brush Selector**, Select the **Pens - Scratchboard tool**.



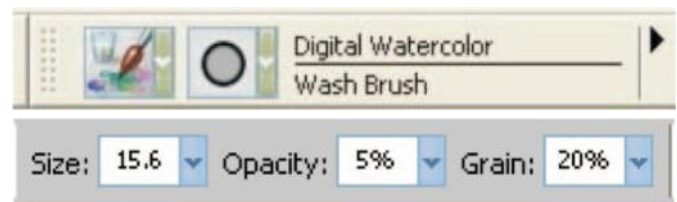
3. Set colour to black.



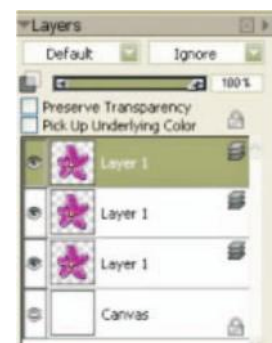
4. Insert a new layer, **Ctrl + Shift + N** or **Layers, menu - New Layer**, and draw a flower on that layer.



5. From the brush selector, choose **Digital Watercolor/Wash Brush** as the variant. Using the Property Bar above your canvas, set at **5% opacity**. This particular variant allows easy build up of colour.



6. Select **Layer menu - Dry Digital Watercolor and Layer - Duplicate Layer 2x's** from **Layer menu - duplicate layer**. You should now have 3 flower layers.



The CDU Committee meets 1st Tuesday of each month.  
7pm until 9.30pm - 8 Pamela Place, Ringwood North, 3135

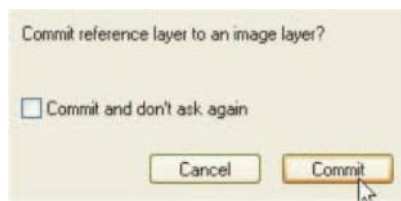
Next CDU Meeting will be held on third Tuesday in month - 21 September 2010

7. Select the top layer and go to the **Edit Menu - Transform - Rotate**. Set to **30 degrees**. From the **Property Bar**, select the **Commit Transformation**

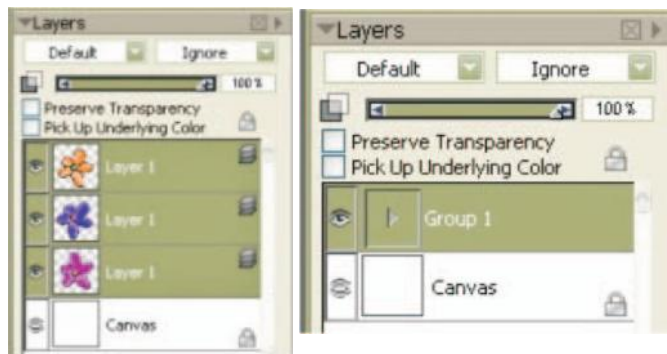


**button**. Repeat these steps on the second layer but set to **60 degrees**.

8. In the **Layers palette**, select the top layer and go to **Effects menu - Tonal Control - Adjust Colours**. Click **commit** when it asks you to. **Move the hue slider** to get the colour you would like to transform to. Repeat with the second layer.



9. In the **Layers palette** select all 3 flower layers by holding down the **shift** key and select each layer. Select **Layer menu - Group Layers** or **ctrl + G**.



10. Go to the toolbar, on the bottom right is the **Image hose Nozzle Selector**. Click the **Nozzle Selector** and once the menu is open, click the **black arrow**. From the menu, Select **Make Nozzle from Group**. **File - Save as Flowerhose\_RIFF**.



Nozzle Selector



11. Open a new Document set to **500 x 500** and **150 ppi**.

12. From the **Brush Selector**, choose **Image Hose - Spray Size P**.

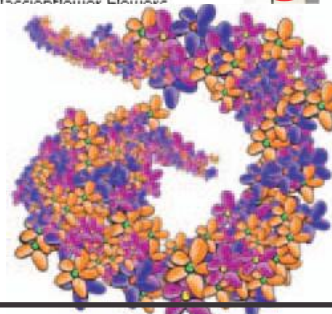


The letters indicate how you control the hose  
 B = Bearing  
 W = Wheel  
 P = Pressure  
 D = Direction  
 R = Randomly

13. From the **Image Hose Library** (arrow), choose **Load Nozzle** and select the document you just saved. Paint away! Experiment with different variants of the Image Hose.



Library arrow



## Corel announces the launch of CorelDraw Premium Suite X5

Corel Corporation has just announced the launch of a the new Premium Suite. This has all the features of the CorelDraw X5 but has now been expanded to include more professional features and versatility such as complete **website creation**, high speed **video editing** with Videostudio Pro X3 and now powerful **Flash animation** with SWiSH Max3 plus much more. CorelDownunder has asked Corel for a review copy so further information will be given at a meeting in the near future.